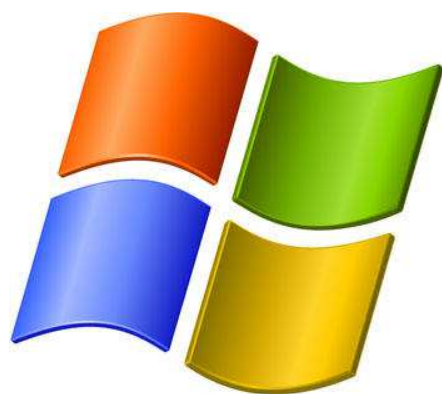




Manual

ISSC Universiteit Leiden | Postbus 9512 | 2300 RA Leiden | 071 527 8888



Manual Wireless Printing

Opdrachtgever:	ISSC	Versienummer:	1.1
Auteur:	Alexander	Datum:	2 december 2011

Introduction

This manual describes how to set up your Windows notebook for Wireless Printing with the Leiden University or eduroam network of the Leiden University.

For an up-to-date overview of locations for Wireless Printing, please go to this locations: <http://issc.leidenuniv.nl/wireless-access/wireless-printen.html>

Settings

1. Start Windows explorer
2. Type in the name of the printserver `\\vuwvps08` in the Windows explorer address bar and press <enter>



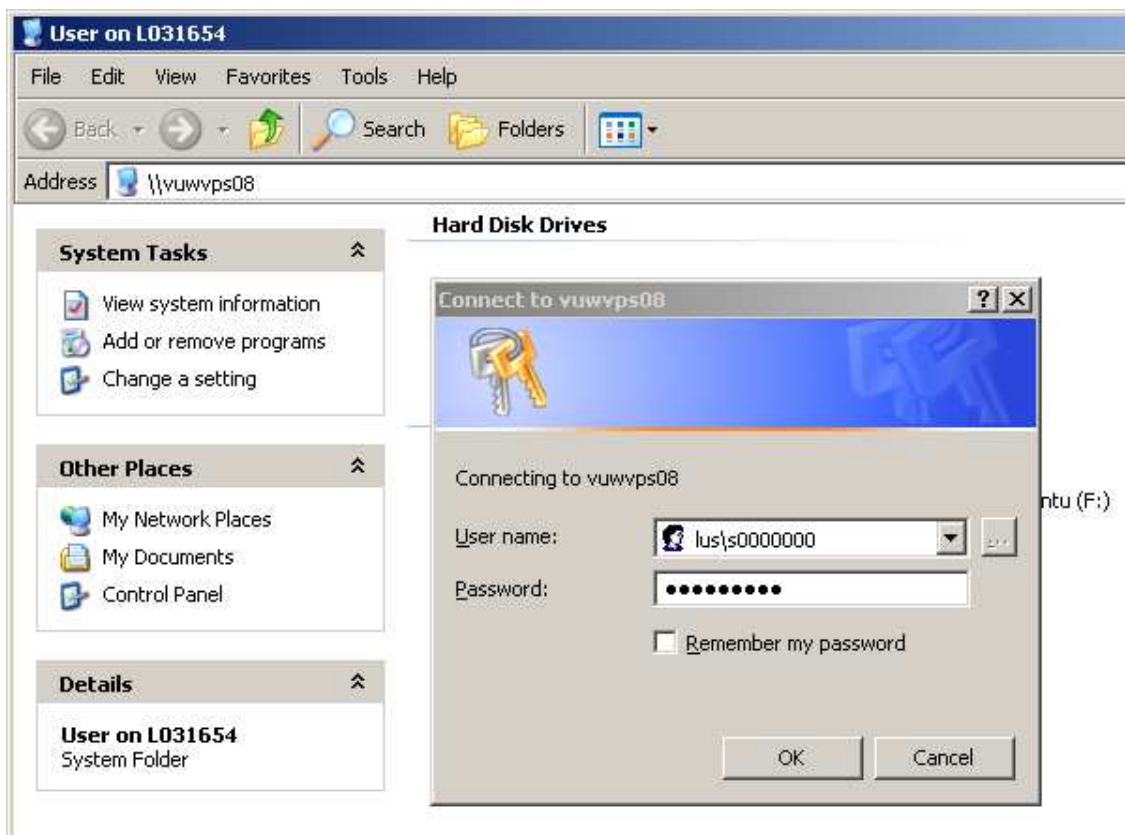
You will now get a pop-up with a longon screen connected to the vuwvps08 printserver.

3. Log on to this printserver with your ULCN credentials.

Note: the example below, describes the log on procedure for students

- **Students** have to log in as shown below: at the **User name** field, type **lus\student number**

Employees use **vuw\ULCN-username** at the **User name** field, instead of **lus\student number**

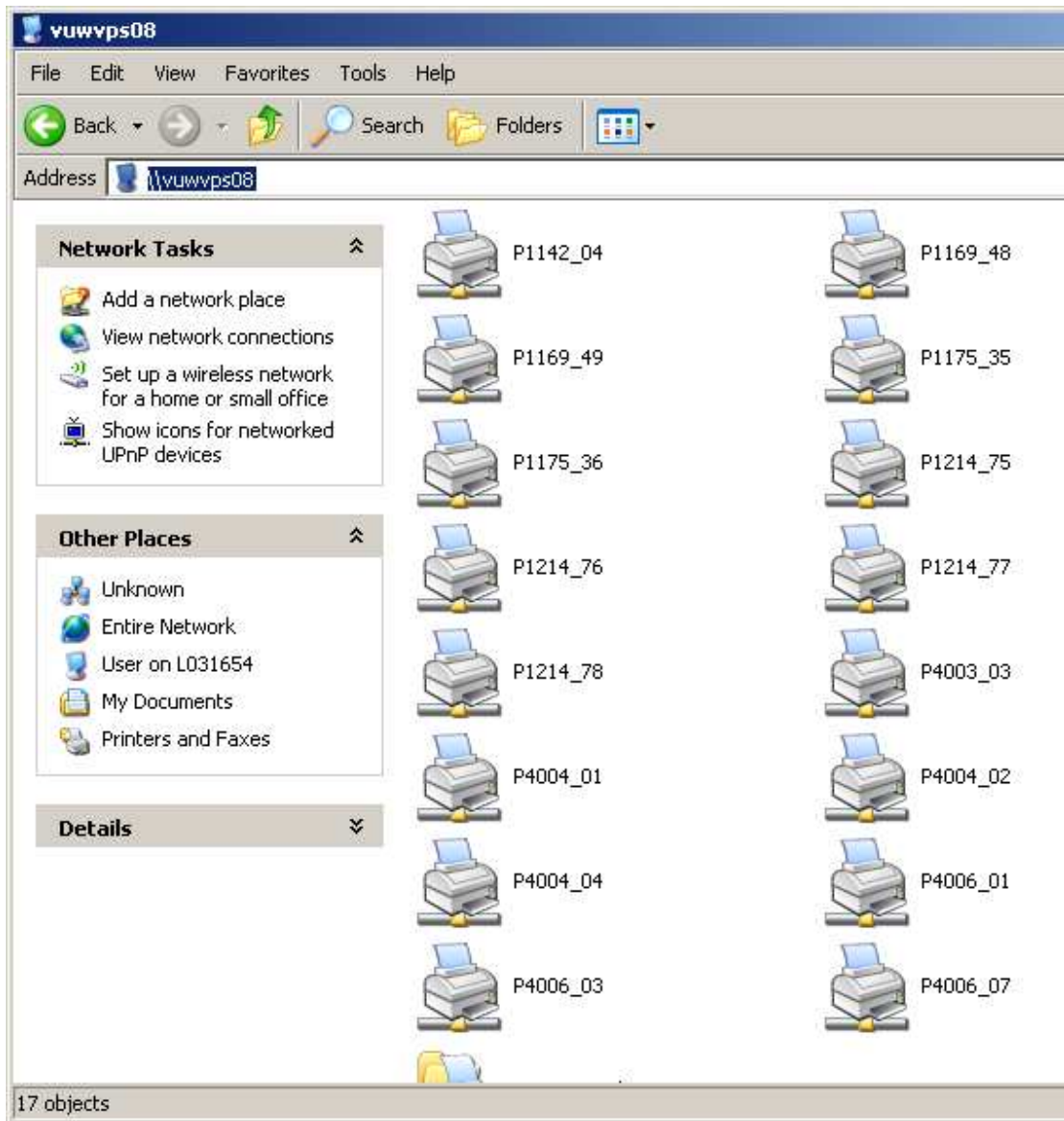


By saving your password, you don't have to perform all the described actions every time you want to use a printer.

Note: if your ULCN password has been changed, you must also change this password in Windows. With Windows Vista and Windows 7 you can reset this password with the credential manager. The credential manager can be found in the control panel.

With Windows XP, you can reset this password as described below:
start->run->"control userpasswords2"

Now you will get a summary of all the printers you can use on our Wireless Connection.



4) You can select your preferred printer by double clicking. Windows will install the drivers for the selected printer. After installation you can use this printer from applications on your computer.