



Universiteit
Leiden

User Guide

Surfdrive



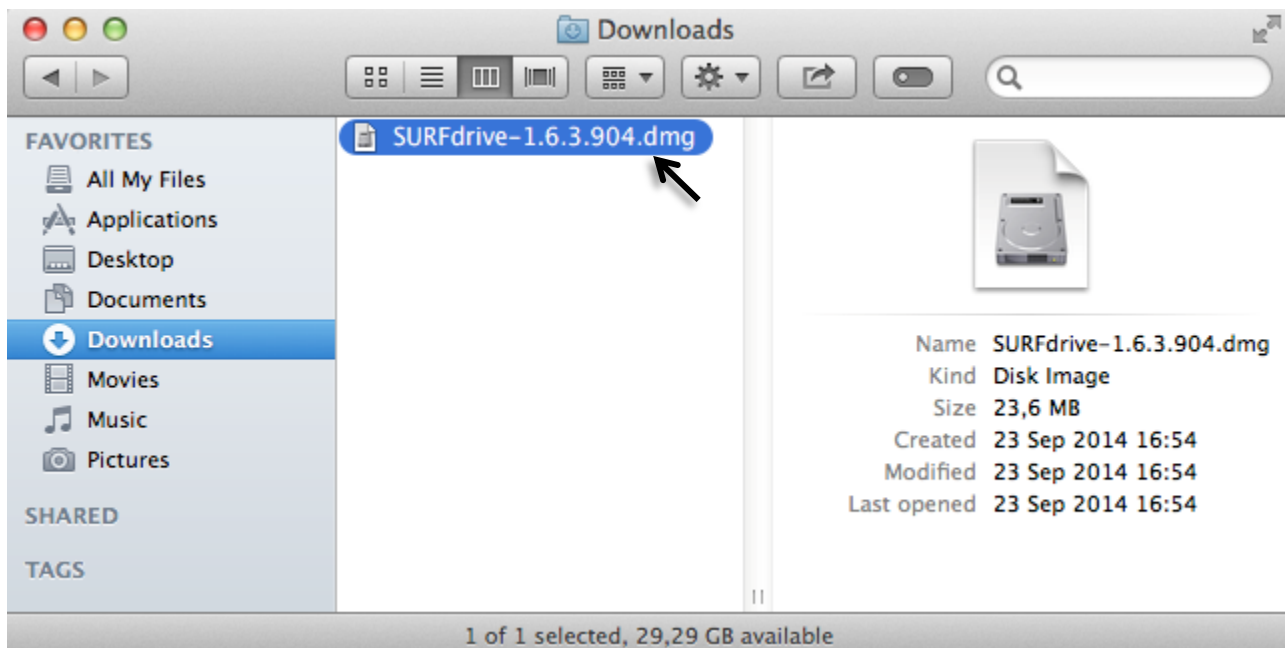
This manual describes how to install and configure the SURFdrive sync client on your Apple Mac.

Installing SURFdrive

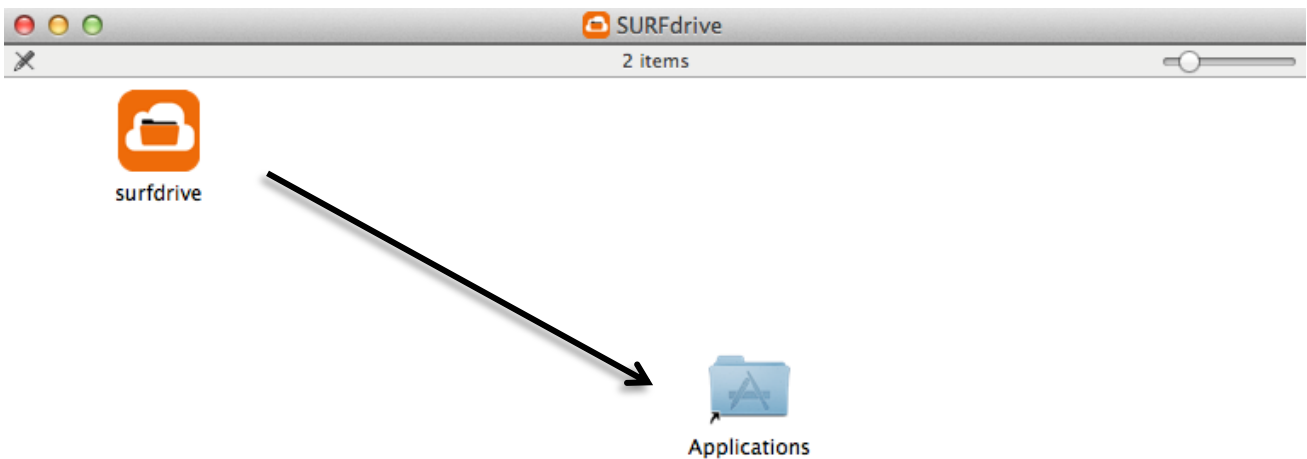
1) Download the SURFdrive application (Mac OS X-client) via <http://www.surfdrive.nl>



2) Double-click the SURFdrive install file.



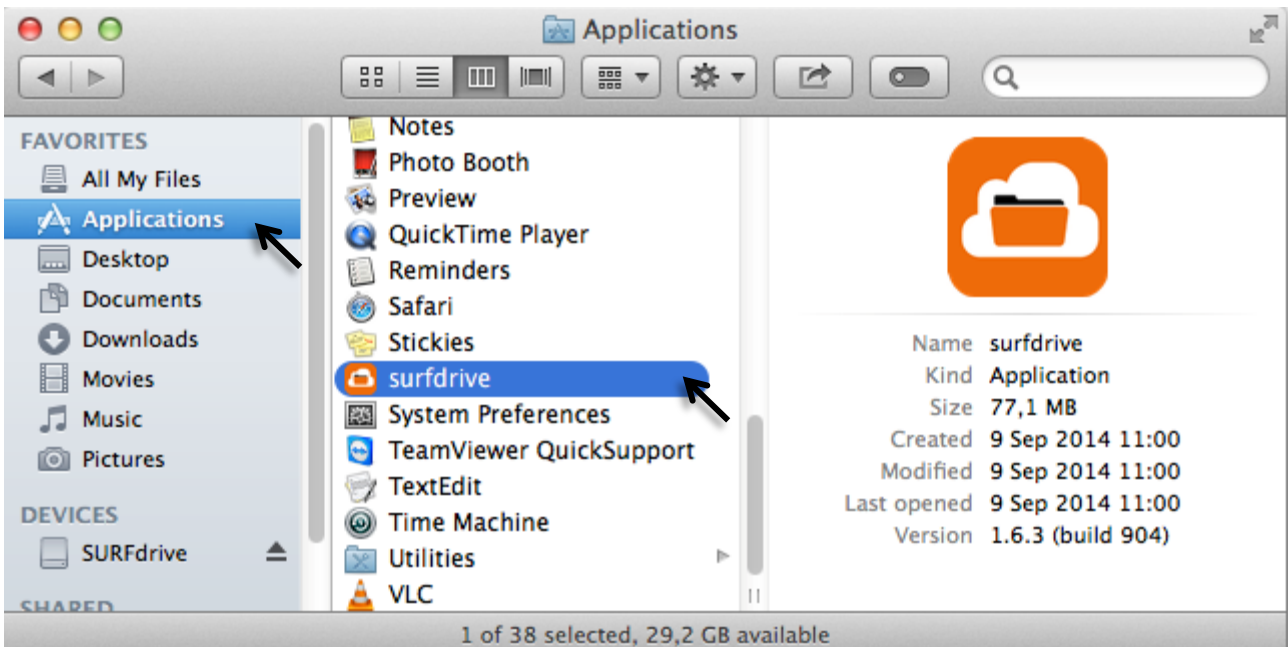
3) Drag the “**surfdrive**” application to your “**Applications**” folder.



Configuring SURFdrive

The first time you start SURFdrive you will be asked to configure SURFdrive. This means that you have to start SURFdrive in a different fashion this one time.

1) Open “**surfdrive**” from your Applications folder



Note:



Depending on rights and setting on Mac OS X you may be asked for your administrator username and password.





2) Select “Leiden University”.





SURFdrive – SURFconext

Login via your institution HELP | EN | NL

Select your institution and continue to login to SURFdrive | SURF


Our Suggestion:  Universiteit Leiden
Leiden University 

   
Acadisch Medisch Centrum AMOLF Avans University of Applied Sciences Bureau (KNAW)

3) Please enter your ULCN credentials.

SURFdrive – uAccess Login

 Universiteit Leiden uAccess
Single Sign On

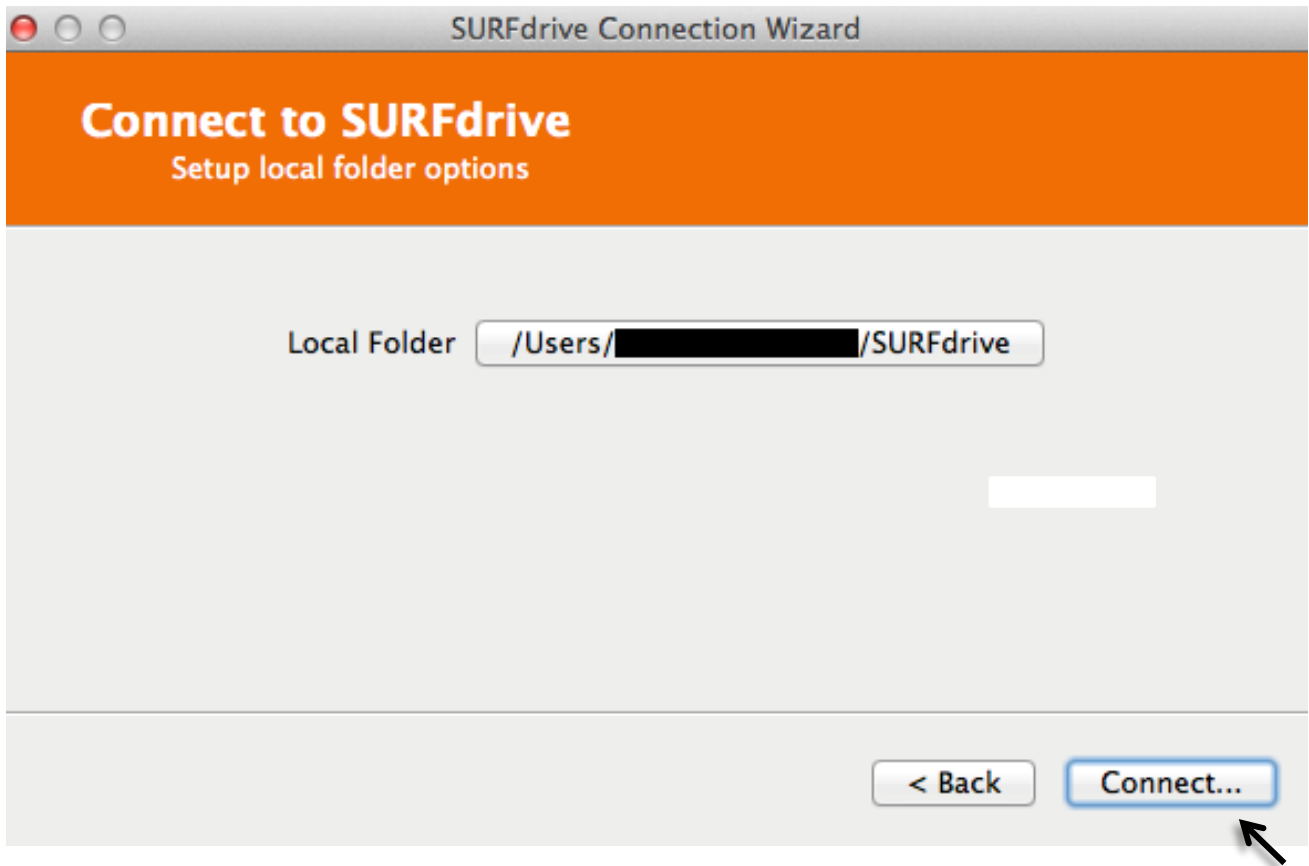
Please login with your ULCN account

Username

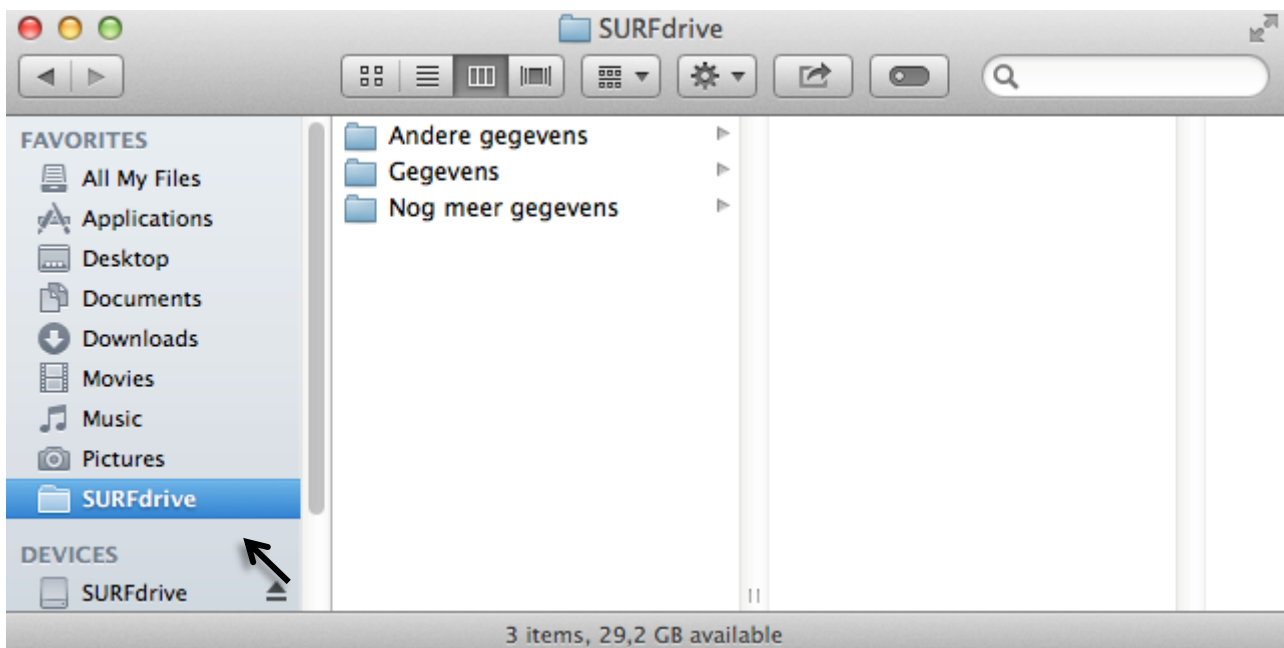
Password

Login

- 4) You can now set up folders for synchronization. By default SURFdrive creates a folder in your home directory, you do not have to change this location. Afterwards select “**Connect**”.



- 5) SURFdrive creates a shortcut to the Local Folder and places this under Favourites in the Finder sidebar.



All files in this folder will be synchronized to your SURFdrive share. This makes all data in this share available to any device connected to your SURFdrive.