



Universiteit Leiden

# User Manual

## Font Installer



Windows 7™

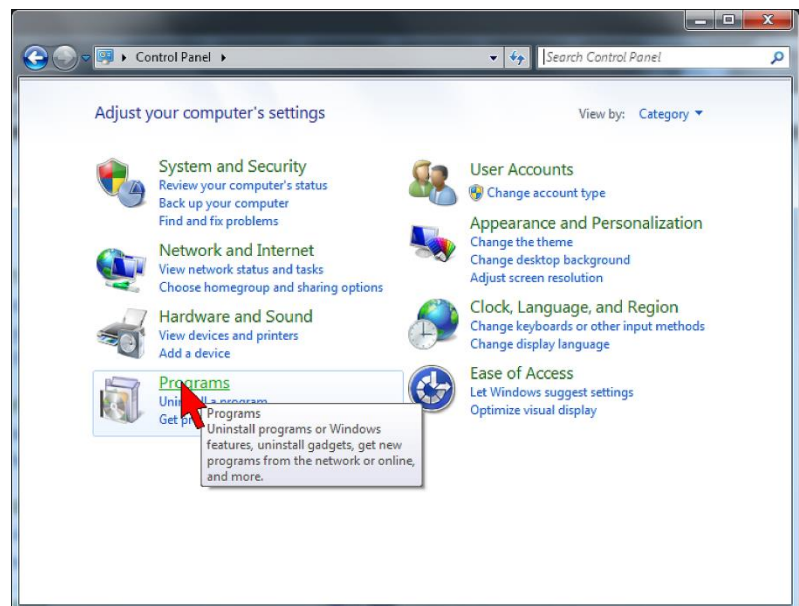
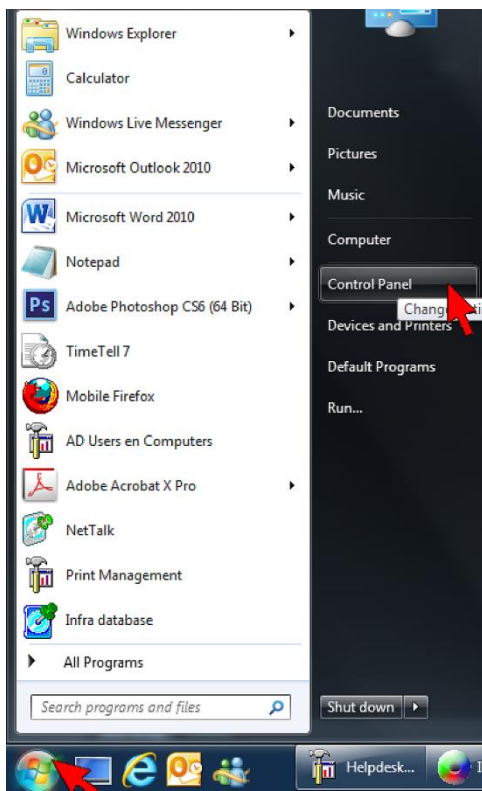
## Font Installer

With the Font Installer you can add additional fonts to your work place.

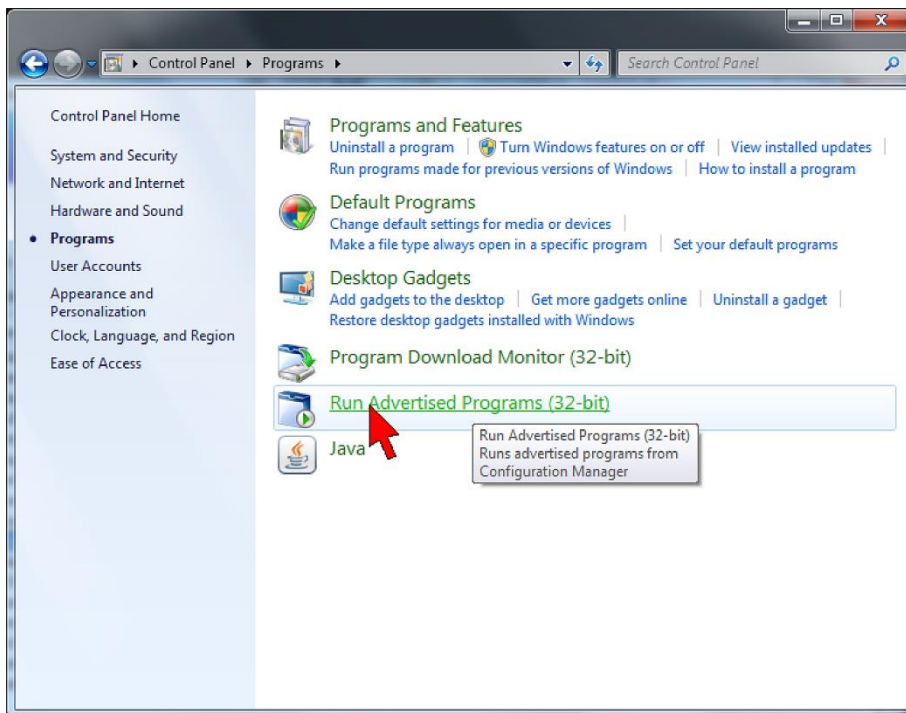
Do you need a font that is not available in the Font Installer database? Than you can request the ISSC to install your font(s) on your workplace. This font must be either licence free, or you must own a licence for this font (because you purchased it separately, or as a part of a larger software package). You can request installation of your own font(s) with the form Request software: <http://issc.leiden.edu/ict-staff/form-software.html>. In that form, please state the full pathname of the font in the field *Additional information*. The ISSC then tests the font and when it is qualified for the university network environment, it will be made available on your work place.

## Adding fonts

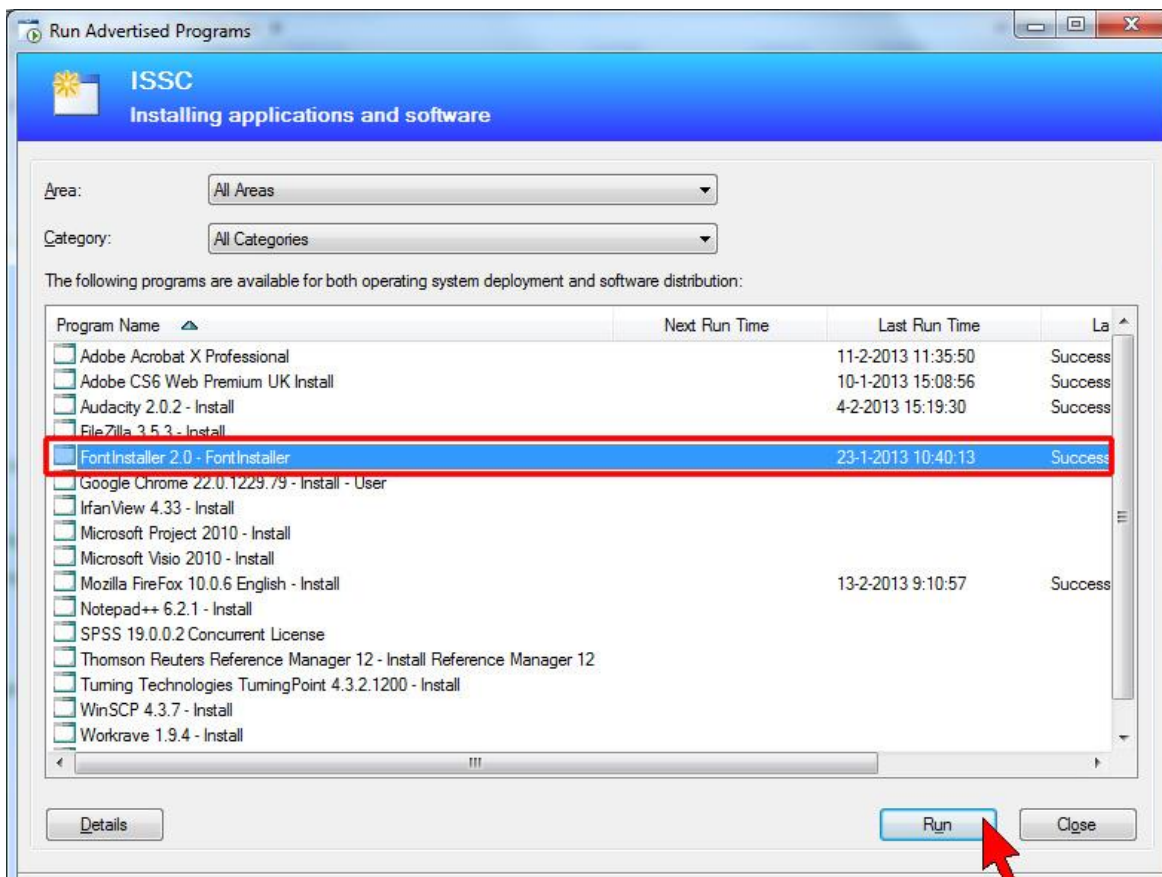
1) Select the **Windows** button, followed by **Control Panel**



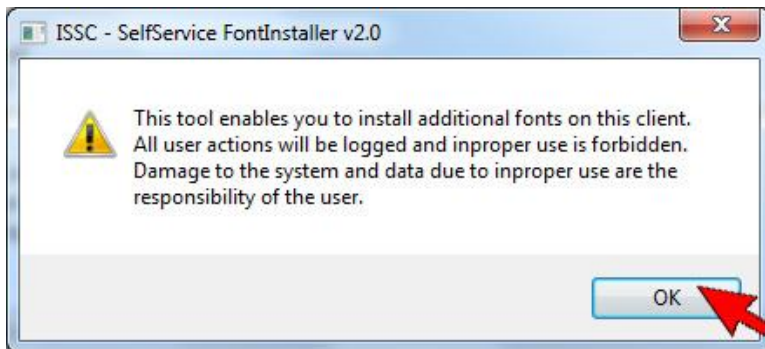
2) Select “Run Advertised Programs”



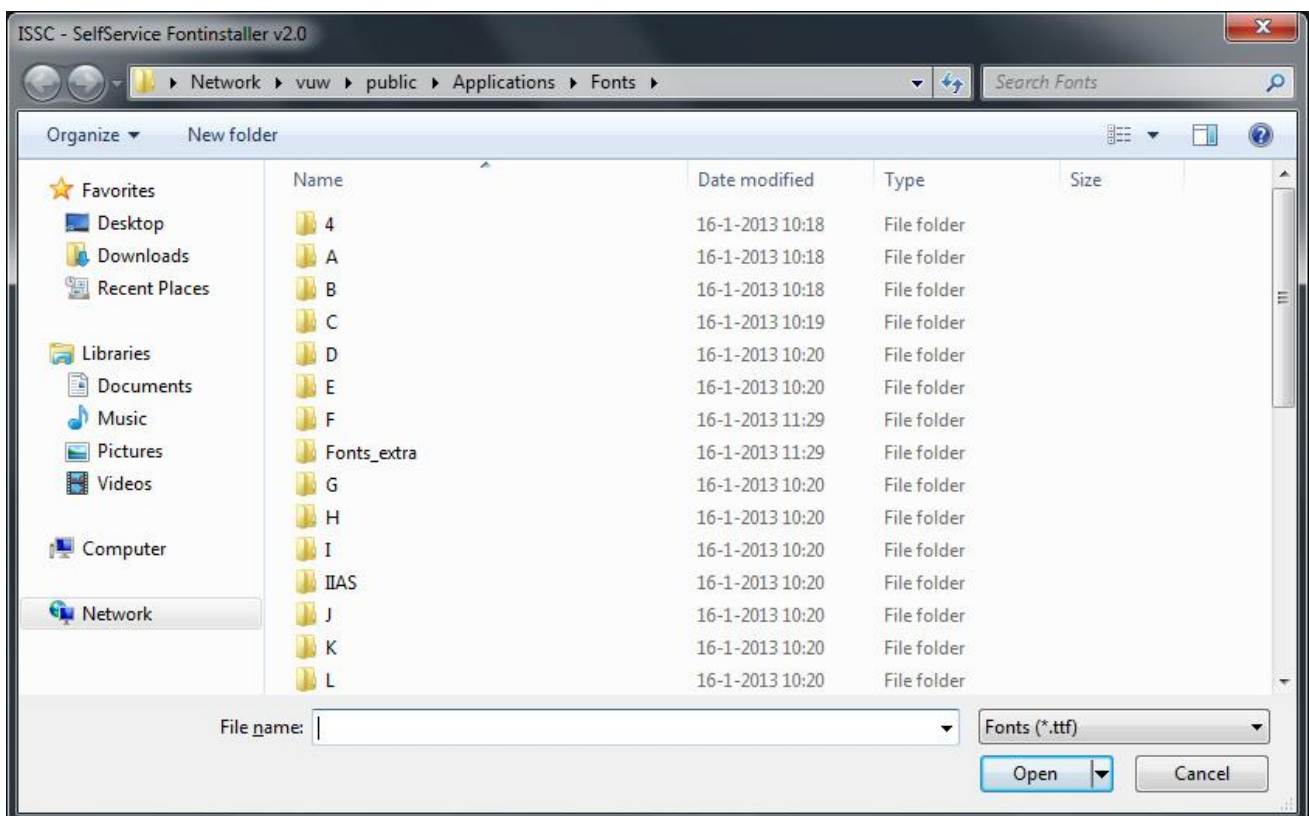
3) Now select “FontInstaller 2.0” and then “Run”



4) The message below will now appear. Select “OK”



5) You will now see an overview in alphabetical order. Select the font of your choice in the relevant folder.



6) You will be given the option of selecting more fonts or of immediately installing this specific font (**Install font**)



The font or fonts will immediately become available at your work place.